

# **Queens Park Estate Inspections April 2014 – March 2016**



**Brighton & Hove  
City Council**

# Foreword

We want council homes to be attractive and comfortable places to live and for their neighbourhoods to be welcoming and safe. We want the homes to be in a good state of repair and places that our residents are proud to call home. The Brighton & Hove City Council Neighbourhoods Team will work with our residents to make this happen.

One of the ways we will do this is for Neighbourhood Officers to carry out formal estate inspections every six months to look at anything that is broken or in need of repair. We welcome residents to join the Neighbourhood Officer on these inspections. Anything that is found is acted on to make the environment better. A Neighbourhood Team Leader will visit between these inspections to check on the work and look at areas that need improvement or investment.

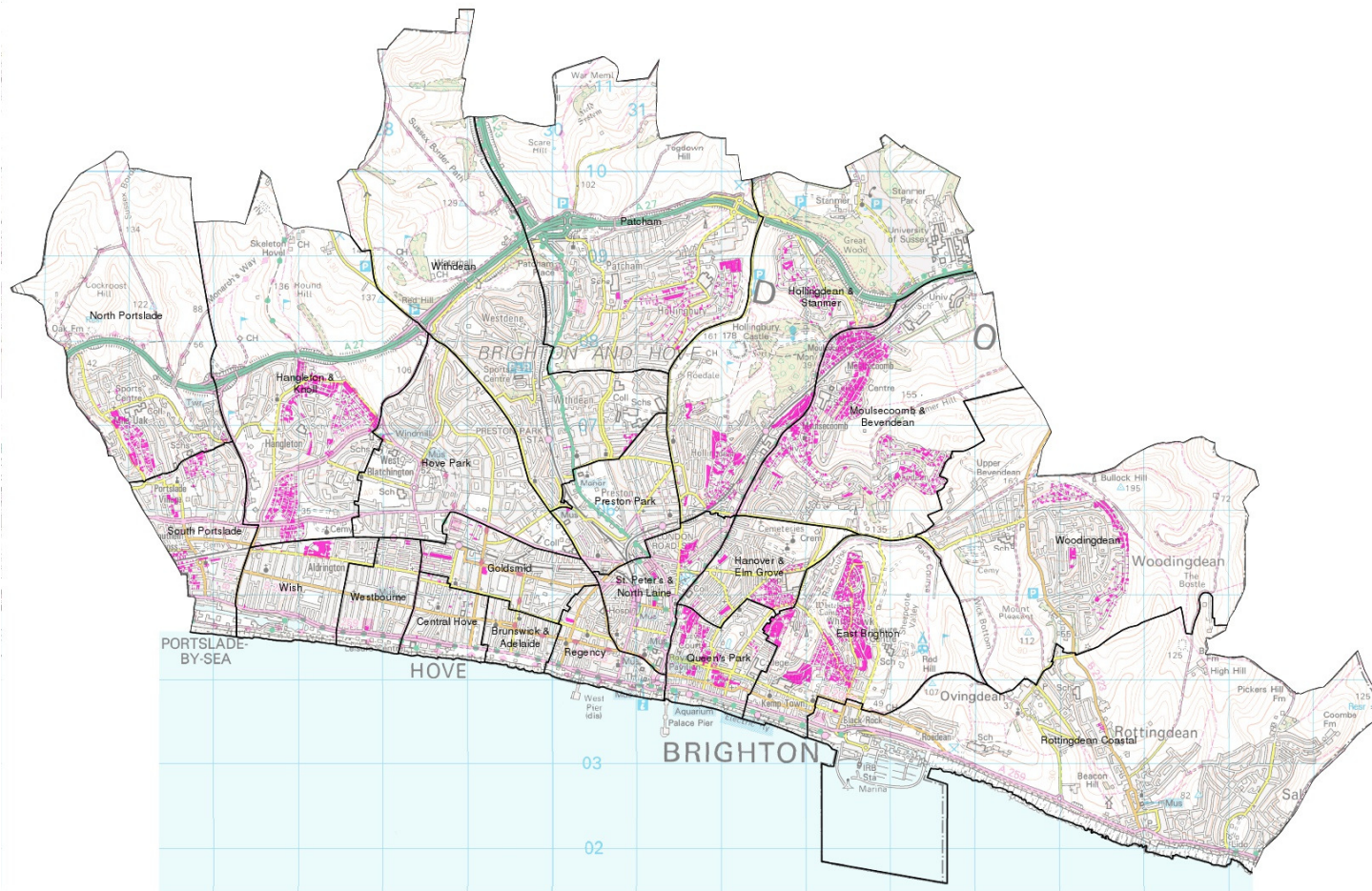
Formal estate inspections for each area are important, but we don't expect our residents to wait to the next estate inspection to report a problem. We have a growing number of residents reporting problems through the council website, sending us photographs of problems via [Neighbourhoods.Team@brighton-hove.gov.uk](mailto:Neighbourhoods.Team@brighton-hove.gov.uk) and even reporting problems through facebook. Get in touch with us if you want more information on this.

We welcome your views and we want you to become involved. Below are details of the inspection areas and schedules. If you would like to join us, complete an inspection on your own, or simply want us to look at something, we would love to hear from you.

Robert Keelan  
Neighbourhoods Manager  
Brighton & Hove City Council

## How we carry out estate inspections

The city of Brighton & Hove is divided into 21 wards. Each ward has council accommodation within it and each council property shown in pink below has an inspection. Wards with a large number of council properties have several inspections whereas a ward with only a small number of properties may only have one.



# Estate Inspection

Date of Inspection:  
Neighbourhood Officer:  
Attendees:  
Weather conditions:

| Date | No. | Block/ Street | Description of problem | Action taken | Job number/<br>reference | Re-<br>inspection<br>date |
|------|-----|---------------|------------------------|--------------|--------------------------|---------------------------|
|      |     |               |                        |              |                          |                           |
|      |     |               |                        |              |                          |                           |
|      |     |               |                        |              |                          |                           |
|      |     |               |                        |              |                          |                           |
|      |     |               |                        |              |                          |                           |
|      |     |               |                        |              |                          |                           |
|      |     |               |                        |              |                          |                           |
|      |     |               |                        |              |                          |                           |
|      |     |               |                        |              |                          |                           |
|      |     |               |                        |              |                          |                           |
|      |     |               |                        |              |                          |                           |

When we complete our estate inspections, we report any issues that we discover. The results are displayed on local notice boards and are published on the council website. We check on any outstanding works between inspections.

## Queens Park Ward Map



## Queens Park Estate Inspections

Public estate inspections start at Essex Place west entrance at 10am

Neighbourhood Team Leader checks will take place in the weeks shown in blue

| Queens Park 1 | 03/06/14 | Week of<br>01/09/14 | 02/12/14 | Week of<br>02/03/15 | 02/06/15 | Week of<br>31/08/15 | 15/12/15 | Week of<br>29/02/16 |
|---------------|----------|---------------------|----------|---------------------|----------|---------------------|----------|---------------------|
| Essex Place   |          |                     |          |                     |          |                     |          |                     |
| Garnet House  |          |                     |          |                     |          |                     |          |                     |

Public estate inspections start outside Malthouse Court office at 10am

Neighbourhood Team Leader checks will take place in the weeks shown in blue

| Queens Park 2        | 06/06/14 | Week of<br>08/09/14 | 12/12/14 | Week of<br>09/03/15 | 19/06/15 | Week of<br>07/09/15 | 08/01/16 | Week of<br>07/03/16 |
|----------------------|----------|---------------------|----------|---------------------|----------|---------------------|----------|---------------------|
| Essex Street         |          |                     |          |                     |          |                     |          |                     |
| Hereford Street      |          |                     |          |                     |          |                     |          |                     |
| Upper Bedford Street |          |                     |          |                     |          |                     |          |                     |
| Malthouse Court      |          |                     |          |                     |          |                     |          |                     |

**Public estate inspections start outside block 1-6 Hampshire Court at 2pm**  
**Neighbourhood Team Leader checks will take place in the weeks shown in blue**

|                 |          |                     |          |                       |          |                     |          |                     |
|-----------------|----------|---------------------|----------|-----------------------|----------|---------------------|----------|---------------------|
| Queens Park 3   | 11/06/14 | Week of<br>15/09/14 | 07/01/15 | W/week of<br>06/04/15 | 22/07/15 | Week of<br>05/10/15 | 19/02/16 | Week of<br>02/05/16 |
| Hampshire Court |          |                     |          |                       |          |                     |          |                     |

**Public estate inspections start at Hereford Court main entrance at 10am**  
**Neighbourhood Team Leader checks will take place in the weeks shown in blue**

|                |                     |          |                     |          |                     |          |                     |          |
|----------------|---------------------|----------|---------------------|----------|---------------------|----------|---------------------|----------|
| Queens Park 4  | Week of<br>07/04/14 | 04/07/14 | Week of<br>06/10/14 | 16/01/15 | Week of<br>13/04/15 | 07/08/15 | Week of<br>02/11/15 | 04/03/16 |
| Hereford Court |                     |          |                     |          |                     |          |                     |          |

**Public estate inspections start at Kingswood Park entrance at 2pm**  
**Neighbourhood Team Leader checks will take place in the weeks shown in blue**

|                 |          |                     |          |                     |          |                     |          |                     |
|-----------------|----------|---------------------|----------|---------------------|----------|---------------------|----------|---------------------|
| Queens Park 5   | 27/06/14 | Week of<br>22/09/14 | 23/01/15 | Week of<br>20/04/15 | 17/07/15 | Week of<br>26/10/15 | 19/02/16 | Week of<br>09/05/16 |
| Kingswood Flats |          |                     |          |                     |          |                     |          |                     |
| Milner Flats    |          |                     |          |                     |          |                     |          |                     |

**Public estate inspections start at Warwick Mount main entrance at 10am**  
**Neighbourhood Team Leader checks will take place in the weeks shown in blue**

|               |          |                     |          |                     |          |                     |          |                     |
|---------------|----------|---------------------|----------|---------------------|----------|---------------------|----------|---------------------|
| Queens Park 6 | 20/05/14 | Week of<br>04/08/14 | 18/11/14 | Week of<br>02/02/15 | 26/05/15 | Week of<br>03/08/15 | 01/12/15 | Week of<br>14/03/16 |
| Warwick Mount |          |                     |          |                     |          |                     |          |                     |

**Public estate inspections start at corner of Lennox Street & Carlton Hill at 2pm**  
**Neighbourhood Team Leader checks will take place in the weeks shown in blue**

| <b>Queens Park 7</b> | <b>Week of<br/>14/04/14</b> | <b>22/07/14</b> | <b>Week of<br/>13/10/14</b> | <b>03/02/15</b> | <b>Week of<br/>04/05/15</b> | <b>04/08/15</b> | <b>Week of<br/>21 /11/15</b> | <b>02/03/16</b> |
|----------------------|-----------------------------|-----------------|-----------------------------|-----------------|-----------------------------|-----------------|------------------------------|-----------------|
| Elmore Road          |                             |                 |                             |                 |                             |                 |                              |                 |
| Lennox Street        |                             |                 |                             |                 |                             |                 |                              |                 |
| St Johns Place       |                             |                 |                             |                 |                             |                 |                              |                 |
| Sussex Street        |                             |                 |                             |                 |                             |                 |                              |                 |
| Sussex Terrace       |                             |                 |                             |                 |                             |                 |                              |                 |
| Turner Road          |                             |                 |                             |                 |                             |                 |                              |                 |
| Tilbury Way          |                             |                 |                             |                 |                             |                 |                              |                 |

**Public estate inspections start at Ecclesden main entrance at 10am**  
**Neighbourhood Team Leader checks will take place in the weeks shown in blue**

| <b>Queens Park 8</b> | <b>Week of<br/>21/04/14</b> | <b>18/07/14</b> | <b>Week of<br/>20/10/14</b> | <b>30/01/15</b> | <b>Week of<br/>27/04/15</b> | <b>14/08/15</b> | <b>Week of<br/>30/11/15</b> | <b>11/03/16</b> |
|----------------------|-----------------------------|-----------------|-----------------------------|-----------------|-----------------------------|-----------------|-----------------------------|-----------------|
| Albion Hill          |                             |                 |                             |                 |                             |                 |                             |                 |
| Albion House         |                             |                 |                             |                 |                             |                 |                             |                 |
| Churchway            |                             |                 |                             |                 |                             |                 |                             |                 |
| Ecclesden            |                             |                 |                             |                 |                             |                 |                             |                 |
| Grove Bank           |                             |                 |                             |                 |                             |                 |                             |                 |
| Lee Bank             |                             |                 |                             |                 |                             |                 |                             |                 |
| Thornsedale          |                             |                 |                             |                 |                             |                 |                             |                 |



**Public estate inspections start at corner of John Street & Chates Farm Close at 2pm**  
**Neighbourhood Team Leader checks will take place in the weeks shown in blue**

|                      |          |                             |          |                             |          |                             |          |                             |
|----------------------|----------|-----------------------------|----------|-----------------------------|----------|-----------------------------|----------|-----------------------------|
| <b>Queens Park 9</b> | 28/05/14 | <b>Week of<br/>11/08/14</b> | 12/11/14 | <b>Week of<br/>02/02/15</b> | 20/05/15 | <b>Week of<br/>10/08/15</b> | 02/12/15 | <b>Week of<br/>21/03/16</b> |
| Chates Farm Court    |          |                             |          |                             |          |                             |          |                             |
| Dinapore House       |          |                             |          |                             |          |                             |          |                             |
| Highleigh            |          |                             |          |                             |          |                             |          |                             |
| Normanhurst          |          |                             |          |                             |          |                             |          |                             |
| Richmond Heights     |          |                             |          |                             |          |                             |          |                             |
| Richmond Parade      |          |                             |          |                             |          |                             |          |                             |

**Public estate inspections start at Wiltshire House main entrance at 10am**  
**Neighbourhood Team Leader checks will take place in the weeks shown in blue**

|                       |          |                             |          |                             |          |                             |          |                             |
|-----------------------|----------|-----------------------------|----------|-----------------------------|----------|-----------------------------|----------|-----------------------------|
| <b>Queens Park 10</b> | 16/05/14 | <b>Week of<br/>18/08/14</b> | 14/11/14 | <b>Week of<br/>05/01/15</b> | 22/05/15 | <b>Week of<br/>17/08/15</b> | 11/12/15 | <b>Week of<br/>28/03/16</b> |
| Wiltshire House       |          |                             |          |                             |          |                             |          |                             |

**Public estate inspections start outside Courtlands main entrance at 2pm**  
**Neighbourhood Team Leader checks will take place in the weeks shown in blue**

| <b>Queens Park 11</b> | <b>Week of<br/>05/05/14</b> | <b>01/08/14</b> | <b>Week of<br/>27/10/14</b> | <b>20/02/15</b> | <b>Week of<br/>11/05/15</b> | <b>21/08/15</b> | <b>Week of<br/>22/11/15</b> | <b>04/03/16</b> |
|-----------------------|-----------------------------|-----------------|-----------------------------|-----------------|-----------------------------|-----------------|-----------------------------|-----------------|
| Ashton Lodge          |                             |                 |                             |                 |                             |                 |                             |                 |
| Courtlands            |                             |                 |                             |                 |                             |                 |                             |                 |
| Cranbrook             |                             |                 |                             |                 |                             |                 |                             |                 |
| Glynleigh             |                             |                 |                             |                 |                             |                 |                             |                 |
| Ivory Place           |                             |                 |                             |                 |                             |                 |                             |                 |
| Nelson Place          |                             |                 |                             |                 |                             |                 |                             |                 |
| Saxonbury             |                             |                 |                             |                 |                             |                 |                             |                 |

**Public estate inspections start outside Oakley House main entrance at 10am**  
**Neighbourhood Team Leader checks will take place in the weeks shown in blue**

| <b>Queens Park 12</b> | <b>Week of<br/>28/04/14</b> | <b>12/08/14</b> | <b>Week of<br/>10/11/14</b> | <b>16/02/15</b> | <b>Week of<br/>18/05/15</b> | <b>17/08/15</b> | <b>Week of<br/>07/12/15</b> | <b>14/03/16</b> |
|-----------------------|-----------------------------|-----------------|-----------------------------|-----------------|-----------------------------|-----------------|-----------------------------|-----------------|
| Oakley House          |                             |                 |                             |                 |                             |                 |                             |                 |
| Park Street           |                             |                 |                             |                 |                             |                 |                             |                 |
| Tillstone Street      |                             |                 |                             |                 |                             |                 |                             |                 |

**Public estate inspections start at end of Rochester Street at 10am**  
**Neighbourhood Team Leader checks will take place in the weeks shown in blue**

| Queens Park 13          | Week of<br>19/05/14 | 22/08/14 | Week of<br>17/11/14 | 27/02/15 | Week of<br>25/05/15 | 28/08/15 | Week of<br>14/12/15 | 26/02/16 |
|-------------------------|---------------------|----------|---------------------|----------|---------------------|----------|---------------------|----------|
| Bute Street             |                     |          |                     |          |                     |          |                     |          |
| 116 & 122 Freshfield Rd |                     |          |                     |          |                     |          |                     |          |
| Evelyn Terrace          |                     |          |                     |          |                     |          |                     |          |
| Hendon Street           |                     |          |                     |          |                     |          |                     |          |
| Rochester Street        |                     |          |                     |          |                     |          |                     |          |
| Sutherland Road         |                     |          |                     |          |                     |          |                     |          |

**Public estate inspections start at St John's Mount main entrance at 2pm**  
**Neighbourhood Team Leader checks will take place in the weeks shown in blue**

| Queens Park 14  | Week of<br>26/05/14 | 20/08/14 | Week of<br>24/11/14 | 04/03/15 | Week of<br>01/06/15 | 02/09/15 | Week of<br>14/12/15 | 02/03/16 |
|-----------------|---------------------|----------|---------------------|----------|---------------------|----------|---------------------|----------|
| St John's Mount |                     |          |                     |          |                     |          |                     |          |

**Public estate inspections start at St James's House main entrance at 2pm**  
**Neighbourhood Team Leader checks will take place in the weeks shown in blue**

| Queens Park 15   | Week of<br>28/04/14 | 26/08/14 | Week of<br>01/12/14 | 24/02/15 | Week of<br>18/05/15 | 25/08/15 | Week of<br>30/11/15 | 6/02/16 |
|------------------|---------------------|----------|---------------------|----------|---------------------|----------|---------------------|---------|
| St James's House |                     |          |                     |          |                     |          |                     |         |

**Public estate inspections start at Tyson Place main entrance at 10am**  
**Neighbourhood Team Leader checks will take place in the weeks shown in blue**

|                       |                             |          |                             |          |                             |          |                             |          |
|-----------------------|-----------------------------|----------|-----------------------------|----------|-----------------------------|----------|-----------------------------|----------|
| <b>Queens Park 16</b> | <b>Week of<br/>02/06/14</b> | 05/09/14 | <b>Week of<br/>15/12/14</b> | 13/03/15 | <b>Week of<br/>08/06/15</b> | 11/09/15 | <b>Week of<br/>07/12/15</b> | 18/03/16 |
| Tyson Place           |                             |          |                             |          |                             |          |                             |          |

**Public estate inspections start outside 1- 6 Ardingly Court at 10am**  
**Neighbourhood Team Leader checks will take place in the weeks shown in blue**

|                       |                             |          |                             |          |                             |          |                             |          |
|-----------------------|-----------------------------|----------|-----------------------------|----------|-----------------------------|----------|-----------------------------|----------|
| <b>Queens Park 17</b> | <b>Week of<br/>12/05/14</b> | 28/08/14 | <b>Week of<br/>03/11/14</b> | 05/03/15 | <b>Week of<br/>15/06/15</b> | 17/09/15 | <b>Week of<br/>11/01/16</b> | 24/03/16 |
| Ardingly Court        |                             |          |                             |          |                             |          |                             |          |

**Public estate inspections start at Kebbell Lodge main entrance at 10am**  
**Neighbourhood Team Leader checks will take place in the weeks shown in blue**

|                                    |                             |          |                             |          |                             |          |                             |          |
|------------------------------------|-----------------------------|----------|-----------------------------|----------|-----------------------------|----------|-----------------------------|----------|
| <b>Queens Park 18</b>              | <b>Week of<br/>09/06/14</b> | 12/09/14 | <b>Week of<br/>07/12/14</b> | 20/03/15 | <b>Week of<br/>22/06/15</b> | 18/09/15 | <b>Week of<br/>04/01/16</b> | 25/03/16 |
| Kebbell Lodge                      |                             |          |                             |          |                             |          |                             |          |
| George Street (No 40<br>Flats 1-5) |                             |          |                             |          |                             |          |                             |          |
| Steine Gardens (no 15)             |                             |          |                             |          |                             |          |                             |          |

**Public estate inspections start at Tyson Place main entrance at 10am**  
**Neighbourhood Team Leader checks will take place in the weeks shown in blue**

| <b>Queens Park 19</b> | <b>Week of<br/>11/05/14</b> | <b>19/08/14</b> | <b>Week of<br/>27/10/14</b> | <b>10/02/15</b> | <b>Week of<br/>29/06/15</b> | <b>08/09/15</b> | <b>Week of<br/>18/01/16</b> | <b>22/03/16</b> |
|-----------------------|-----------------------------|-----------------|-----------------------------|-----------------|-----------------------------|-----------------|-----------------------------|-----------------|
| Avon Court            |                             |                 |                             |                 |                             |                 |                             |                 |
| Medway Court          |                             |                 |                             |                 |                             |                 |                             |                 |
| Mount Pleasant        |                             |                 |                             |                 |                             |                 |                             |                 |
| Severn Lodge          |                             |                 |                             |                 |                             |                 |                             |                 |
| Thames House          |                             |                 |                             |                 |                             |                 |                             |                 |
| Trent Place           |                             |                 |                             |                 |                             |                 |                             |                 |
| Cambridge Place       |                             |                 |                             |                 |                             |                 |                             |                 |
| Carlton Mount         |                             |                 |                             |                 |                             |                 |                             |                 |
| Chesterfield Court    |                             |                 |                             |                 |                             |                 |                             |                 |
| Derby Place           |                             |                 |                             |                 |                             |                 |                             |                 |
| Devon Lodge           |                             |                 |                             |                 |                             |                 |                             |                 |